



**Global Institute for Water
Environment and Health**

Leadership For Positive Change

GIWEH Flagship Project :
Develop a Post-2015 Water Monitoring Framework



Address

GIWEH

Global Institute for Water, Environment and Health

10, rue de Chantepoulet

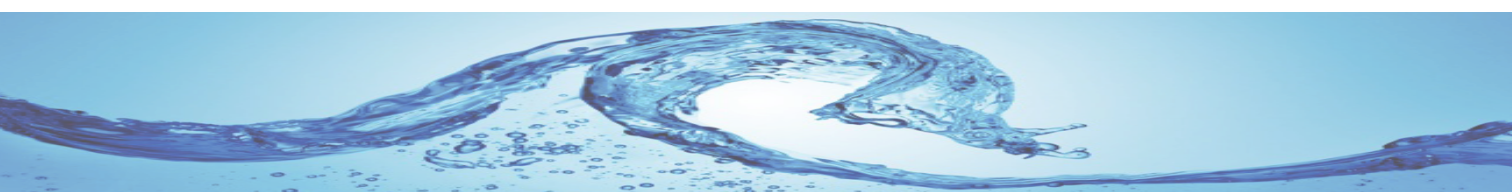
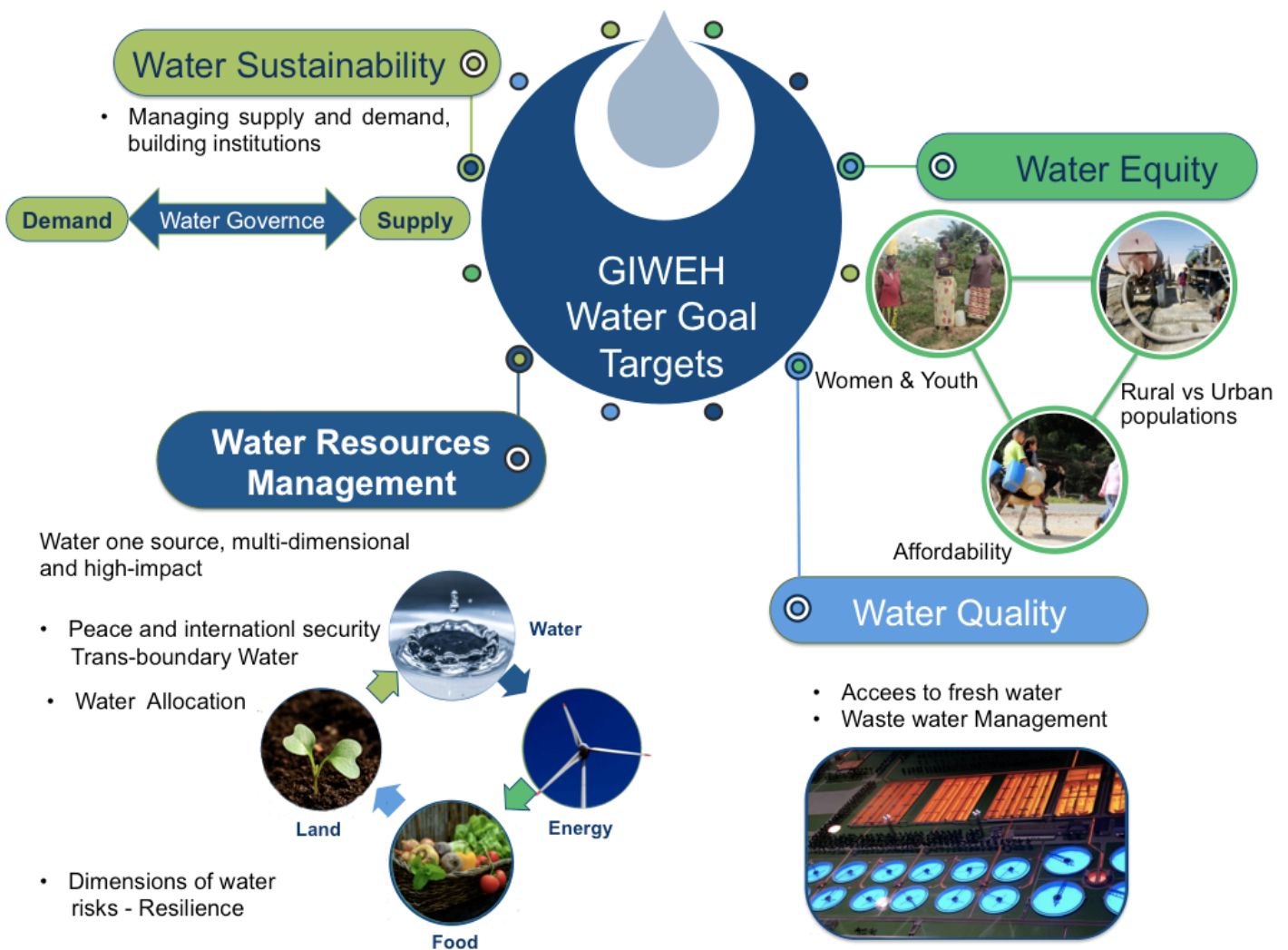
1201 Geneva Switzerland

www.giweh.ch

info@giweh.ch

Introduction / Overview

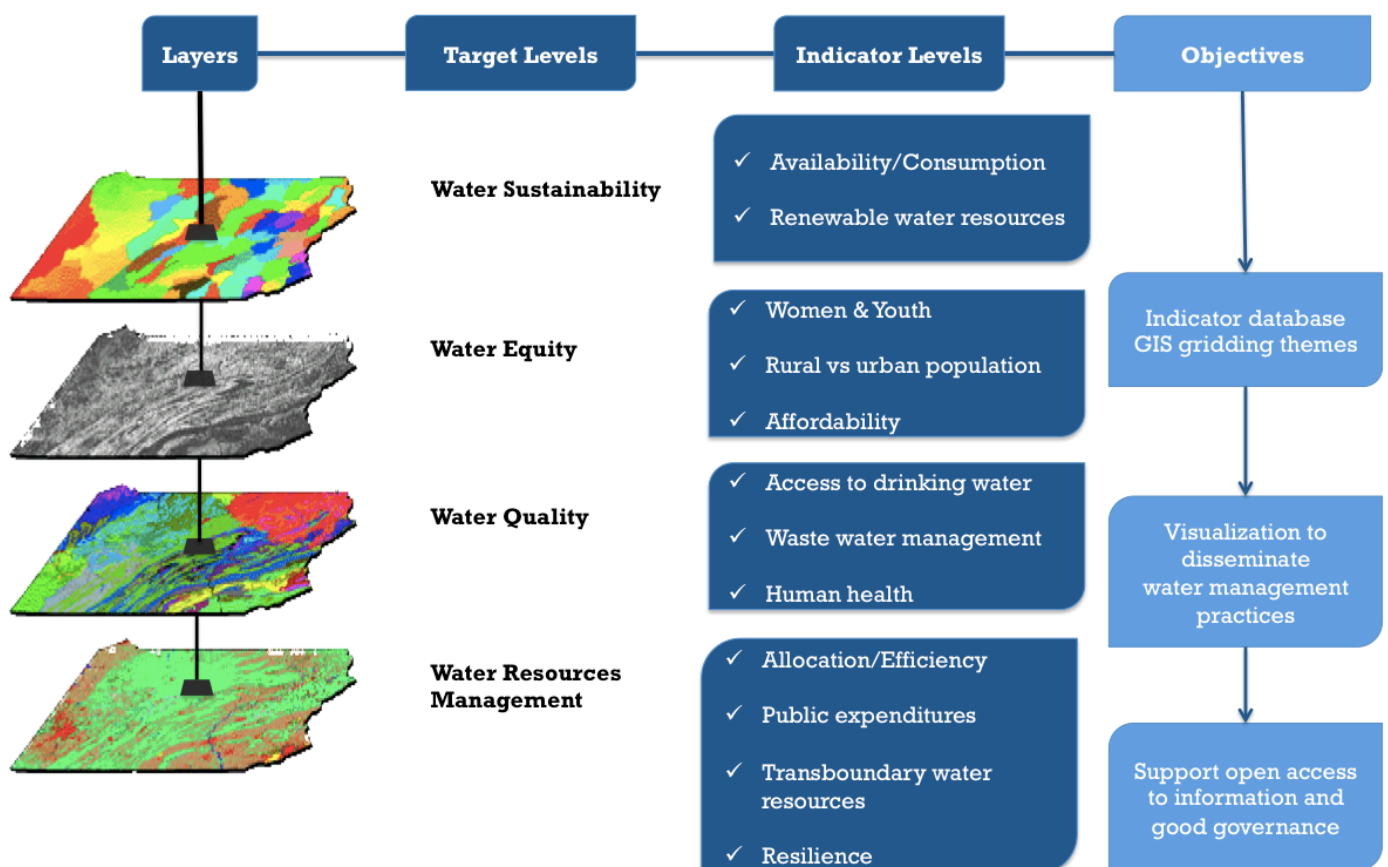
GIWEH's Post-2015 Water Monitoring Framework is an initiative to promote transparency, accuracy, and efficiency in water management in the Africa Great Lakes Region, the WANA region, and in the Caucasus states. Over the next five to ten years, GIWEH aims to firmly establish a strong collaborative network within the target regions, and advance the UN post-2015 water goal with heightened focus on local and regional levels. GIWEH will compile research into a comprehensive data platform, built to enhance connectivity and promote progress across regions and transnational borders.



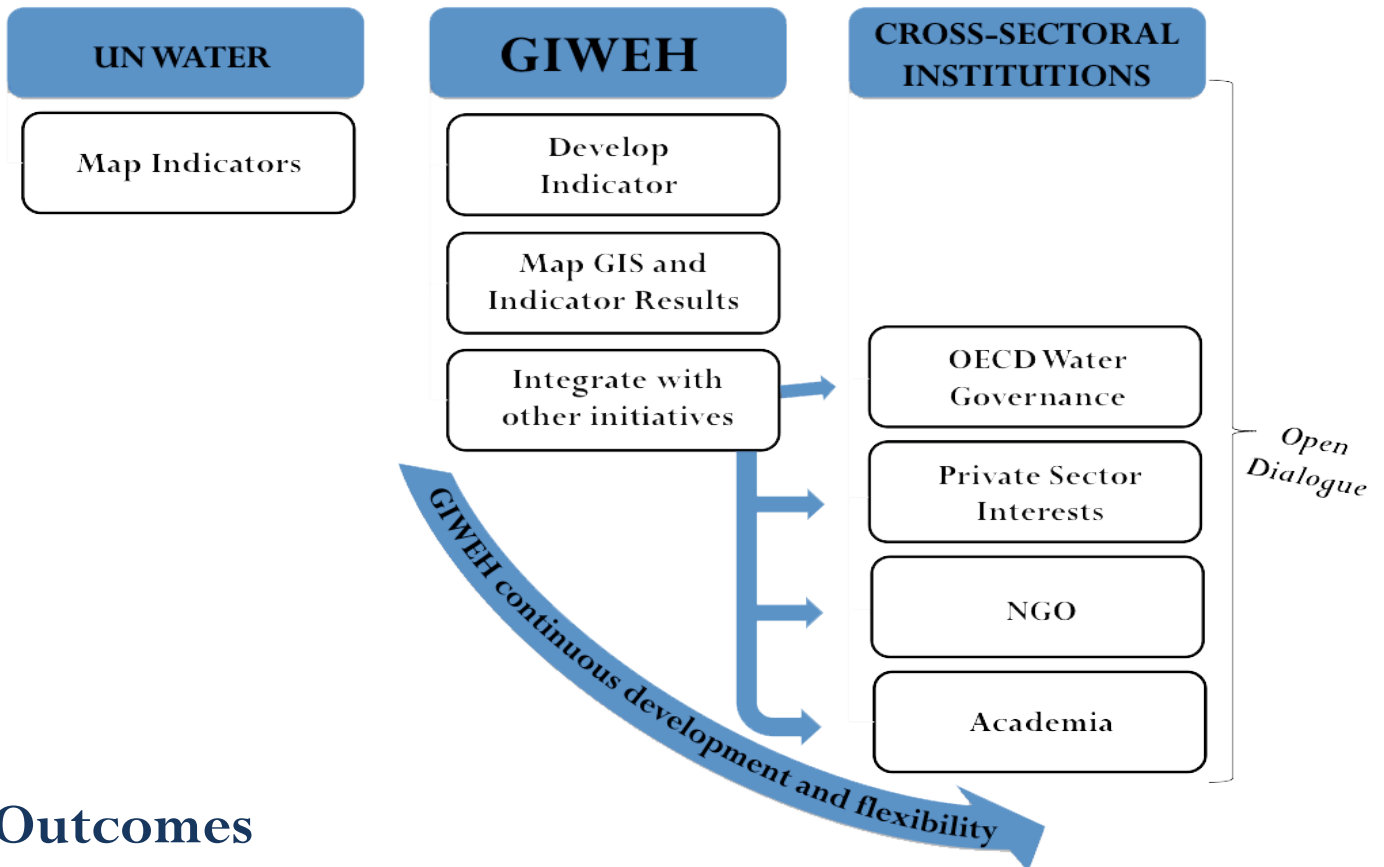
Project Objectives

GIWEH post 2015 goals:

- Shift from broader scope of global targets to concentrated focus on regional and national agendas, with more attention to localized needs.
- Address women's empowerment with water governance and water related issues, in particular in the African region.
- Map GIS data together with the web platform to expand the understanding of vulnerable areas, including political sensitivities.
- Research on droughts, flash flooding, and humanitarian response to take precedence within the broader domain of water management.
- Partnerships for water stewardship built between the private and public sectors. More involvement in the monitoring process to generate momentum at the local level.
- Local staff trained to adopt the different protocols of monitoring.
- Introduce improved practices in water governance.



GIWEH APPROACH



Outcomes

The Post-2015 Water Monitoring Framework will be presented on a dynamic web platform. Digital maps representing data from the public, semi-private, and private sectors will be included, contributing to a diverse collection of visual data, encompassing metrics and indicators both created by the UN Water, GIWEH, as well as those of other global and regional institutions.

The active cartographic data will be publicly available and serve as a tool to support collaboration and effective water management.

Reporting:

Biannual interim reports: Assess technical and analytical progress, highlight areas of opportunity.

Annual progress reports

Comprehensive project report: Written upon completion of the project.

Additional reporting by third parties: Written upon project completion.

